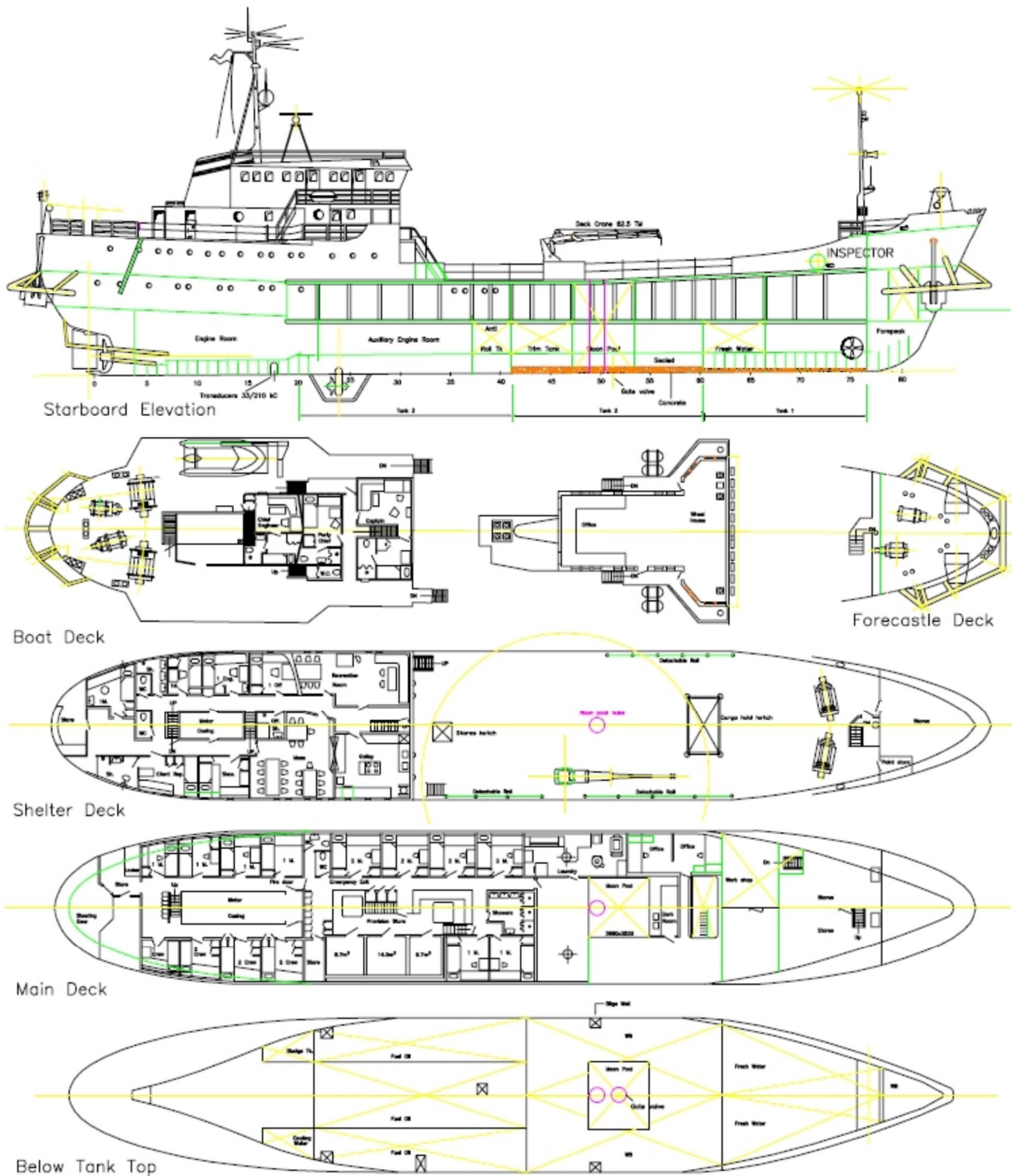




## ESPETEC - INSPECTOR





### Principal Particulars

Name	Inspector
Type of Vessel	Multipurpose Offshore – ROV Support Vessel
Flag	Netherlands
Owner	Nit Sea Navegação Ltda
Year Built	1959 / Rebuild 1978
Builder	Hollen Shipyard
Certificates	RBNA

**Main Characteristics**

Length	59,00 m
Width	9,00 m
Depth Moulded	5,50 m
Max. Draught	5,25 m
Gross Tonnage	734 t
Net Tonnage	220 t
Max. Displacement	1.180 t
Speed	7,5 knots

**Machinery**

Main Engines	750 HP
Generators	2 ea. 270 KVA 440V/60HZ
Transformers	2 ea. 26 KVA 220 VAC
Azimuth Thruster	350 HP
Bow Thruster	300 HP
DP Controlled	1 unit
Propellers	Variable pitch propeller

**Cargo Capacities**

Fuel Capacity	100 t
Fresh water	120 t
Deck Max. Load	500 t
Deck Strength	3,60 t /m <sup>2</sup>
Potable Water	850,00 m <sup>3</sup>

**Accommodation**

32 Persons, one and two berth cabins
Survey room / office on the bridge deck – 20 m <sup>2</sup>
2 ea. Offices and dark room on main deck
Workshop in hold

**Deck Equipment**

Hydraulic crane 62 tm with 5 ton winch ( double wire / 10 ton ) and 11 metre reach
4 ea. Hydraulic general-purpose winches of 5 ton pulling force

**Consumption**

Sailing	3,0 t / day
At Anchor	0,5 t / day
DP mode	3,5 t / day
Survey mode	1,5 t / day

**Point Mooring System**

Aft 2 hydraulic anchor winches of 20 ton pulling force, with 1300m steel wire,diam.30 mm
Fore 2 hydraulic winches with 1000 m steel wire, diam.30 mm and pre-moor system 4 Delta Flipres of 2.5 ton
Mooring line tension meters with bridge read-out

**Working Space**

Deck load 2 ton / m <sup>2</sup>
Work deck space 200 m <sup>2</sup>
Hold space 60 m <sup>3</sup>

**Communication Equipment**

Satcom B tel. n° 00871324432910
Satcom B fax. n° 00871324432915
GMDSS equipment with 2 VHF radio sets and 5 VHF hand sets GMS mobile phone
Email facility ( internet optional ) via Satcom B
Intercom systems, bridge to various substations

**Nautical Equipment**

Furuno daylight radar	1 unit
Sperry gyro compass	1 unit
Robertson auto pilot	1 unit
Robertson follow-sub DP system with joystick	1 unit
Koden GPS receiver	1 unit
Atlas Deso 600s echo sounder	1 unit
Hull mounted 33/210 Khz echo sounder transducers	1 unit
Simrad HPR 309 acoustic tracking system	1 unit
Sercel NR103 DGPS receivers	2 units